

A top-down view of a desk with various items: a white laptop keyboard, a white tablet, a grey notebook with a black pen, white earbuds, and a spiral notebook with a pencil.

# **RISK NZ**

## **Overview for Potential New Board Members**

# About US: RiskNZ and the Board

- An incorporated society of around 800 individual and corporate members
- Incorporated in 2000
- Our purpose is to improve the knowledge and practice of risk management in New Zealand
- We deliver an energetic engagement programme of events and networking activities that promote the development and application of advanced risk management theory and practice
- Our regular events include: breakfast groups, lunchtime seminars, workshops, presentations and an annual conference
- Our members form a strong, engaged community of professional who value our networking opportunities, professional growth, new thinking and our contribution to developing risk practices

# Our Sponsors



# Our Board and staff focus on increasing and improving the following key resources

1. Growing the membership of the Society
2. Improving the value proposition offered to members
3. Growing sponsorship revenue and the value returned to sponsors
4. Managing member subscription revenue
5. Using event revenue to grow our value proposition to members
6. Non-financial support through the use of venues, goodwill of presenters and supporters, goods and services at no cost
7. The capacity, capability, goodwill and commitment of the unpaid Board
8. The work of our Executive Officer and Admin Officer
9. Growing our working capital

# Where we are and where we are going

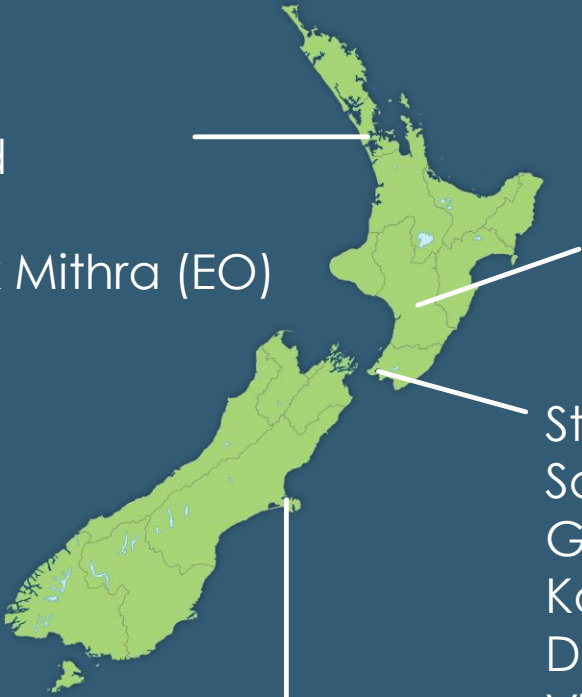
- Mostly Government
- Good private sector representation
- Predominantly in the main cities
- Intend to grow our membership in the regions
- Distributed Board members
- Our strongest presence is currently in Wellington
- A focus on growing our membership across New Zealand

Jane Rollin  
Darroch Todd  
Brent Sutton  
Sathya Ashok Mithra (EO)

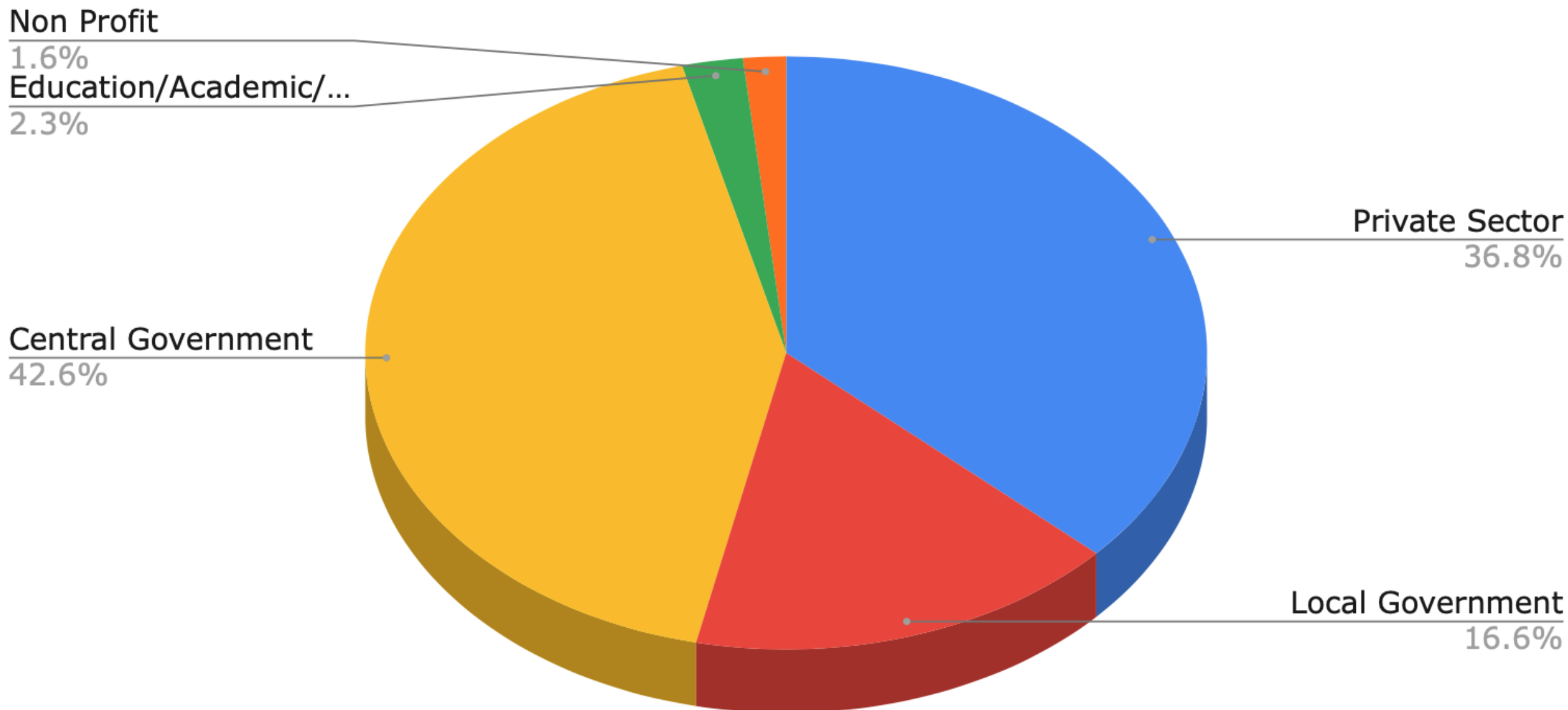
Miles Crawford

Stephen Hunt  
Sally Pulley  
Gary Taylor  
Katie Phillips  
David Turner  
Virtual Assistants

Kristin Hoskin



# RiskNZ Members - Sector Split



# RiskNZ Members - Regional Split

HAMILTON

1.4%

HAWKES BAY

2.6%

QUEENSTOWN

1.0%

BAY OF PLENTY

2.5%

AUCKLAND

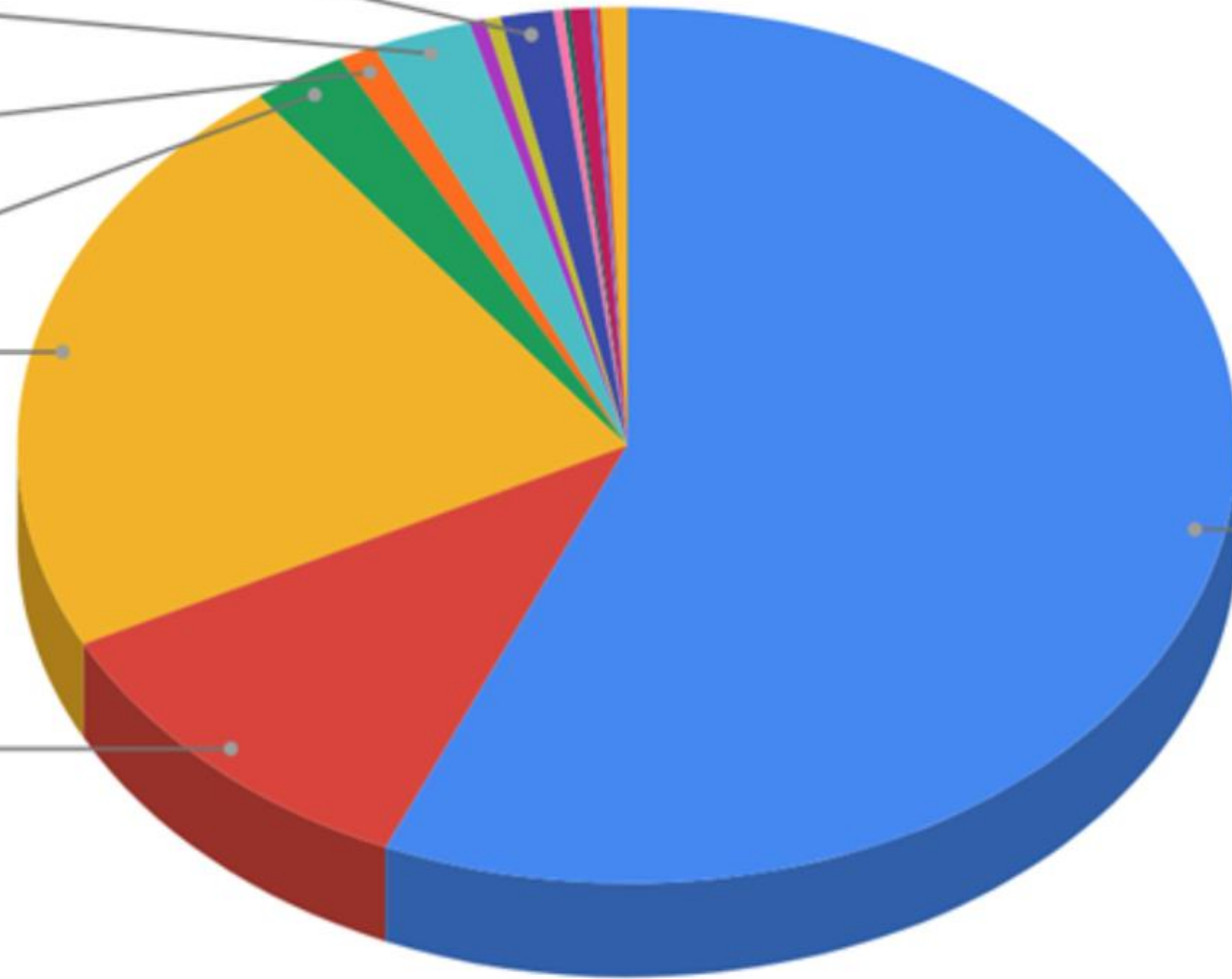
22.2%

CHRISTCHURCH

11.0%

WELLINGTON

56.5%



# RiskNZ - Structure

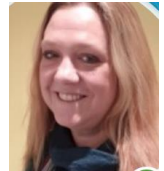
## Board

## Chair

## Executive Roles



Deputy Chair



Secretary



Treasurer

Six other  
elected Board  
members



Executive  
Officer



Administration  
Officer





# The Work of the Board

- Each Board member leads at least one workstream of our annual plan, and contributes assistance to other workstreams
- We have monthly Board teleconference meetings that last one hour
- Board members contribute to events and activities
- The Board meets twice a year for a one-day face-to-face meeting – alternating between Auckland and Wellington
- Our strategy comprises four enduring strategic goals that guide an annual workplan across four main pillars of activity

# Strategic Goals

- Promote the principles, theory & practice of risk management
- Promote knowledge about the management of risk
- Expanding communication about the management of risk within New Zealand and Internationally
- Increase interest in membership



## ADVOCACY AND INFLUENCE

- Representation
- Thought leadership
- Members views
- Influence Government & decision makers



## NETWORKING, EVENTS AND COMMUNICATION

- RiskNZ conference
- Awards of Excellence
- Webinars, Seminars & Networking events
- Member communication
- Valuable website



## EDUCATION AND PROFESSIONAL DEVELOPMENT

- Risk management professional recognition for members
- Risk Management training and tools



## PURPOSE AND PERFORMANCE

- Governance
- Board members
- Membership & value

# Election Process for RiskNZ Board Members 2020

Oct 2019  
New Board member sessions



Early Nov - Feb 2020



CALL FOR NOMINATIONS



SHARE NOMINATION PROCESS & CANDIDATE DETAILS WITH MEMBERS



VOTING (ELECTION DATE TBC)



NEW BOARD MEMBERS ANNOUNCED



INDUCTION

Early March 2020



START OF NEW BOARD TERM

Late March 2020



BOARD FACE TO FACE

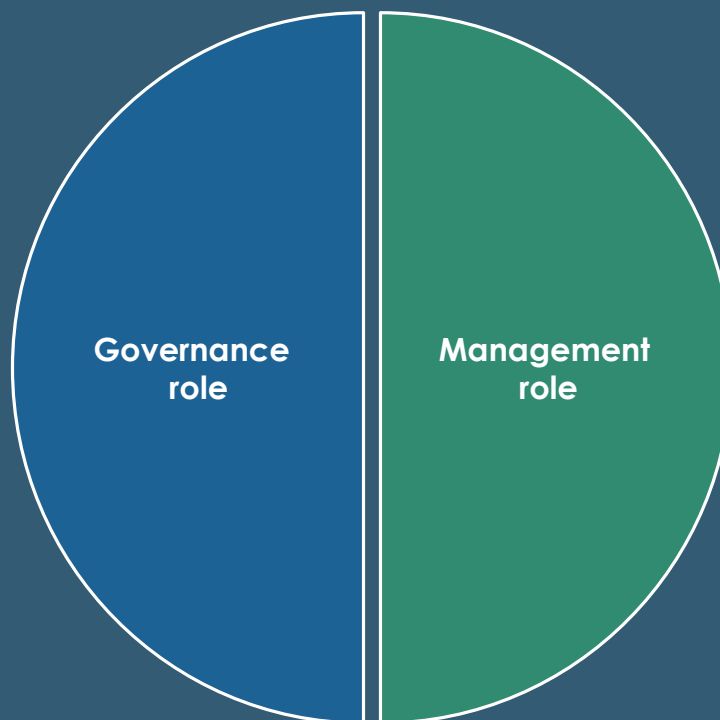
# Board Member Attributes

- There will be Six Board member places at the Feb 2020 election.
- Board members are visible and influential – active engagement with our members is important.
- We want the board to reflect our members – (diversity of age, gender, culture and experiences).
- Board members have a good understanding of the practical application of risk based decision making and are also committed to good governance and management.
- Self aware; strong ethics and integrity; independent thinker; great relationship managers.
- All our Board members and to make a difference and play a part in developing our profession!

# RiskNZ Board roles

Board members have a dual role – part governance and part management. Both are equally important in supporting the delivery of the Strategy for RiskNZ

- **Strategy** setting & annual **business plan** monitoring
- Recognise **member interests**
- Approve **annual targets** and **financials**
- Evaluate **management team performance**
- Attend monthly board meetings / annual face to face meeting



- **Actively lead** key business plan portfolio
- Work with management team on **portfolio delivery**
- **Report to Board** on portfolio
- Develop **networks**
- Support RiskNZ events and activities

# Thank you

If you would like to learn more about the opportunity to join our Board, please contact;

[sathya@risknz.org.nz](mailto:sathya@risknz.org.nz)

or

[adminofficer@risknz.org.nz](mailto:adminofficer@risknz.org.nz)

They will connect you to one of our Board members to discuss your interests further.

